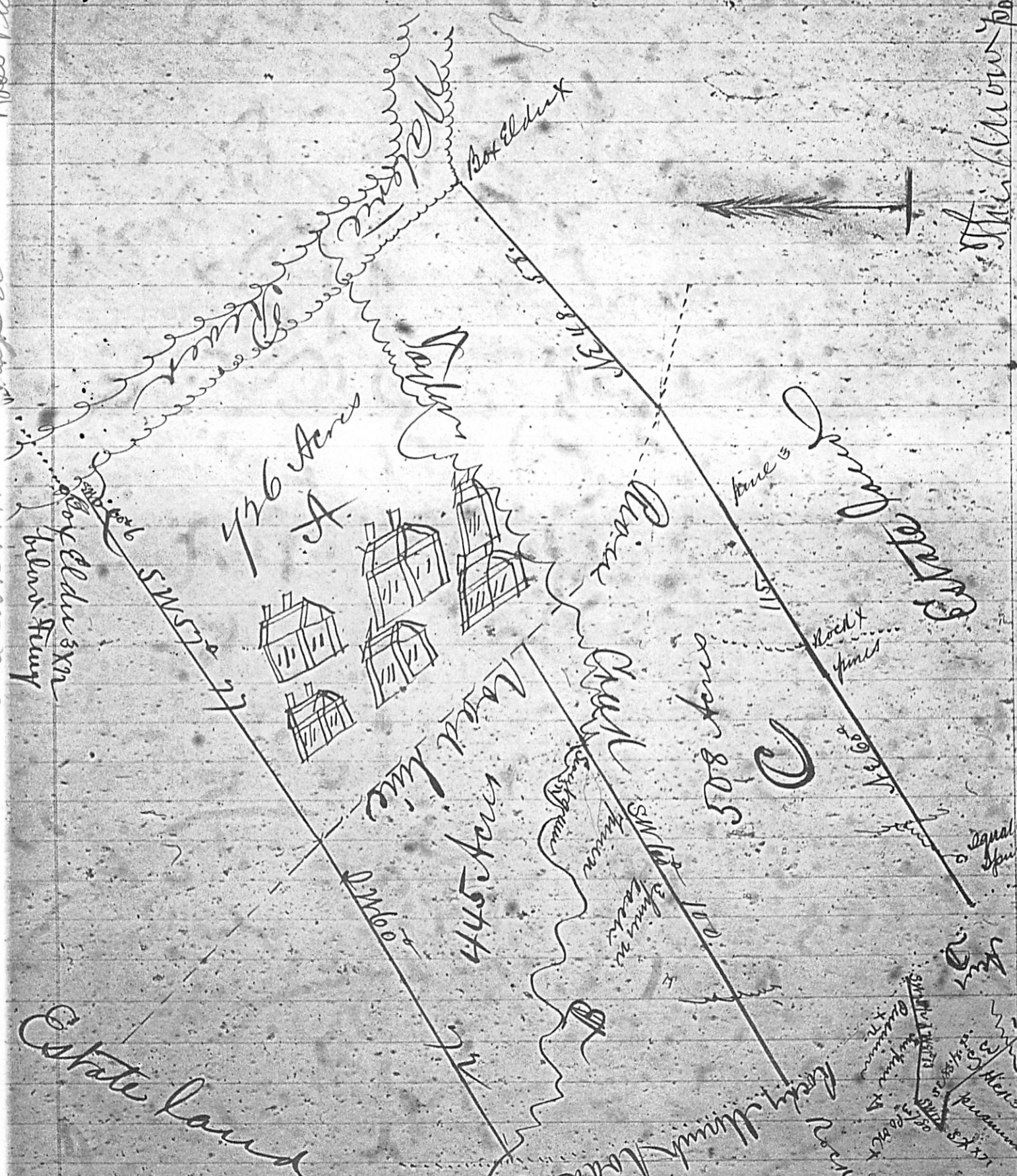
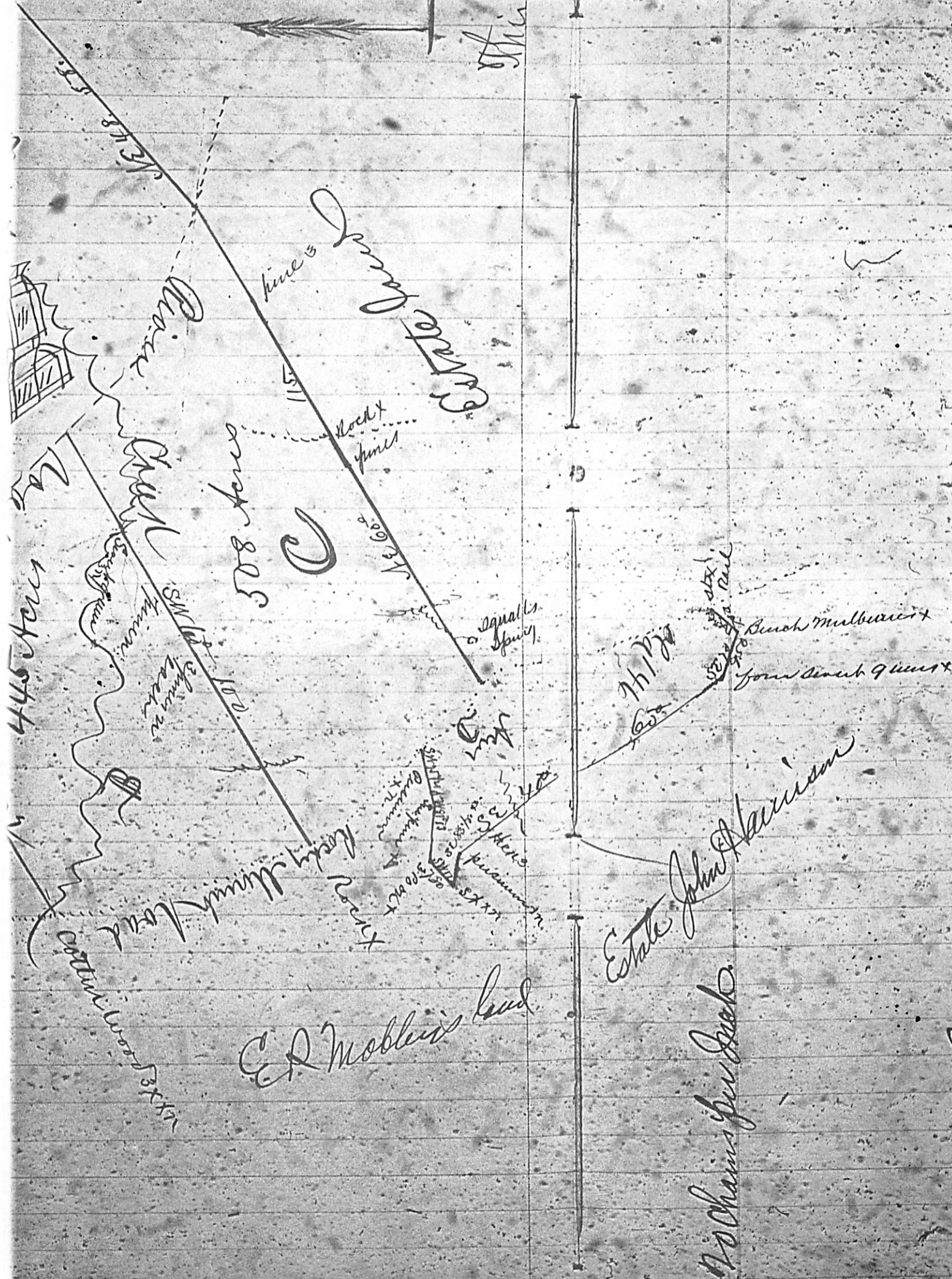


ER Mobile

Stir / Blow pointing North





North

445 Acres

308 Acres

77/14
600

Estate John Harrison

E.P. Mobley's land

As shown by Prob.

Black

Rock

SW 1/4
Squalls Spire

Rocky Mountain

Rocky Spire

Squalls Spire

Bunch Mulberries
John Smith 9 acres

SW 1/4
Squalls Spire
300 AC

1/4 Sec 34 T28N R18E

120 Main Street

W. P. Williams
120 Main Street
New York

James M. Williams
120 Main Street
New York

3

Dearest Father I do hereby certify that I have received

the above described book of laws, known as the People's
the real estate of John P. Ray dead which refers to certain
and twenty five (1875) acres and divide as follows
Number and Twenty six (26) Acres and includes what is called the
way between the Rice Road and Maline River 34 40 Acres lying betw
across the old Rocky Mount Road, 6508 Acres lying also between
and the old Rocky Mount road 8746 Acres lying also between
and known as a part of the Rock Hill place, the whole situated in
on the water of Maline River, and Saylors Creek, and has been
and boundaries, as the above plat more fully represents

Done at New York 5th 1869

R. D. W.

Given to date 16th day of June

SE 1/4 of 2nd 1/4 of 36

Bunch Mulberry

Four Dec 9 1851

Abraham

I do hereby certify that I have surveyed and administered
 a tract of land, known as the **Rose place** being a part of
 of the ~~Ray~~ ^{Ray} land which gives to certain Eighteen Hundred
 (1820) acres and divides it as follows: I represent to you
 a tract of 726 Acres and includes what is called the Rose Quarter by
 Road and Water River B 445 Acres lying between the River Road
 Mount Road, C 508 Acres lying also between the River Road
 and Mount Road D 146 Acres being part of the old Rocky Mount Road
 part of the Rochell place, the whole situated in Fairfield County
 the River and Taylors Creek, and has such forms marks, buttons
 in above plat mine fully represents

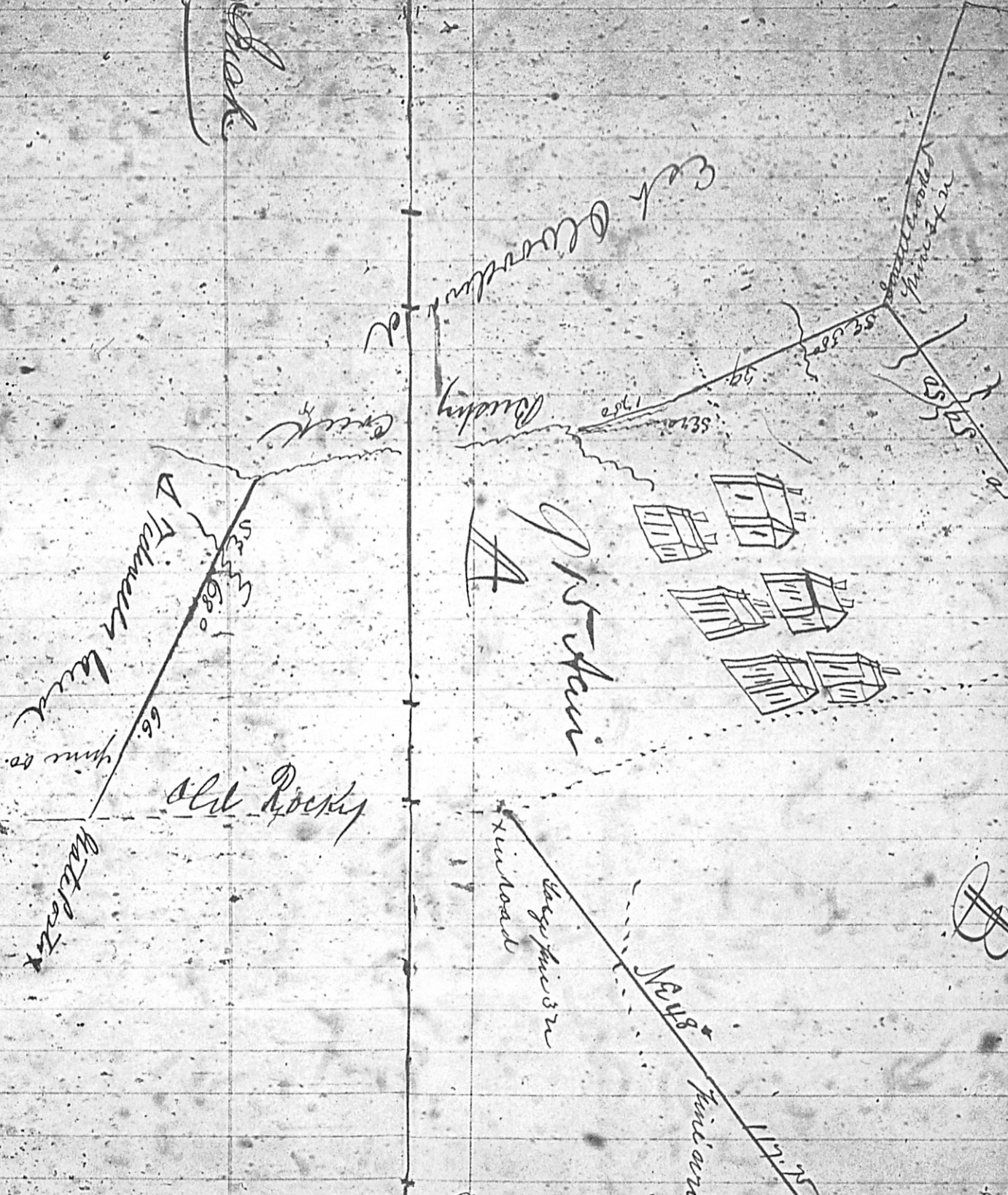
R. A. Robertson D.D.

Record to date 16th Day of June 1852



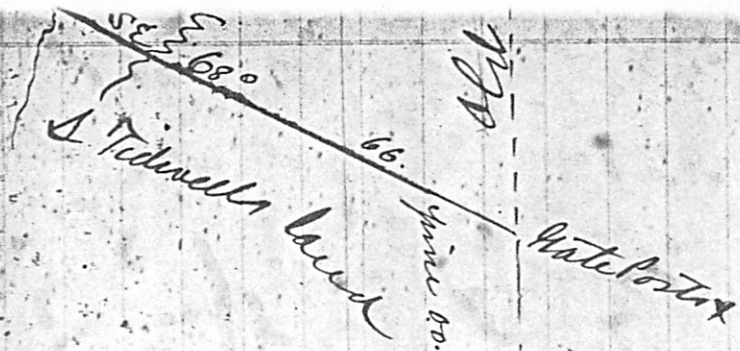
Smith's...

Madison Spokane



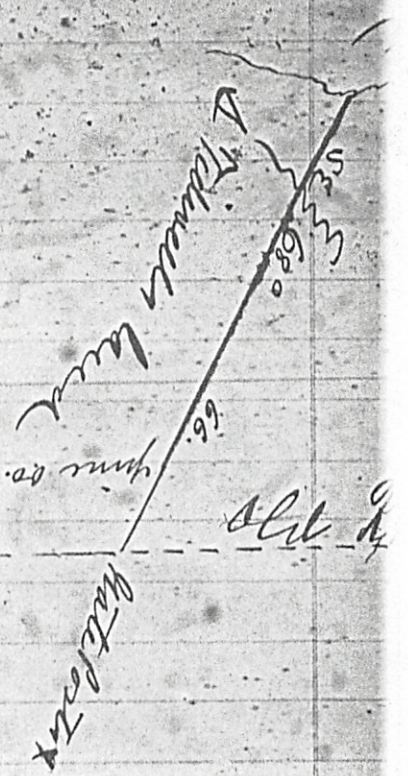
(Handwritten symbol)

To Charles Fox Creek



South Carolina I do hereby certify that I have resurveyed and
above delineated tract of land known as the Dutchman's Creek
part of the Real Estate of N. A. Peay decd which I find to contain
sixty and sixty five (1865) acres lying on Dutchman's Creek
on both sides of the old Rocky Mount Road and divided it as
915 acres lying on Bushy Creek West of the old Rocky Mount Road
Dutchman's Creek Quarter, 8945 acres lying on Dutchman's
old Rocky Mount Road, the whole situated in Fairfield County
Dutchman's Creek and Bushy Creek Waters of Walter's River all
Mansy, fittings and boundaries as the above plat more fully
Surveyed Oct 5th 1869

P. A. Peay
Remains to date June 15th 1882



showing entirely that I have necessarily observed the
 to of it. I pay most which spirit to contain English
 (1860) sees spring on Philadelphia and road bridge
 the rocky almost road was divided into sections by
 why could not of the old rocky almost road and includes the
 water. It is seen spring on Philadelphia Creek and the
 at the northern entrance in Fairfield County on the water of
 the rocky Creek National Park from our Fairfield
 mountains as the above sketch from July 1869
 1869

Seems to date June 18th 1869
 J. W. Robinson